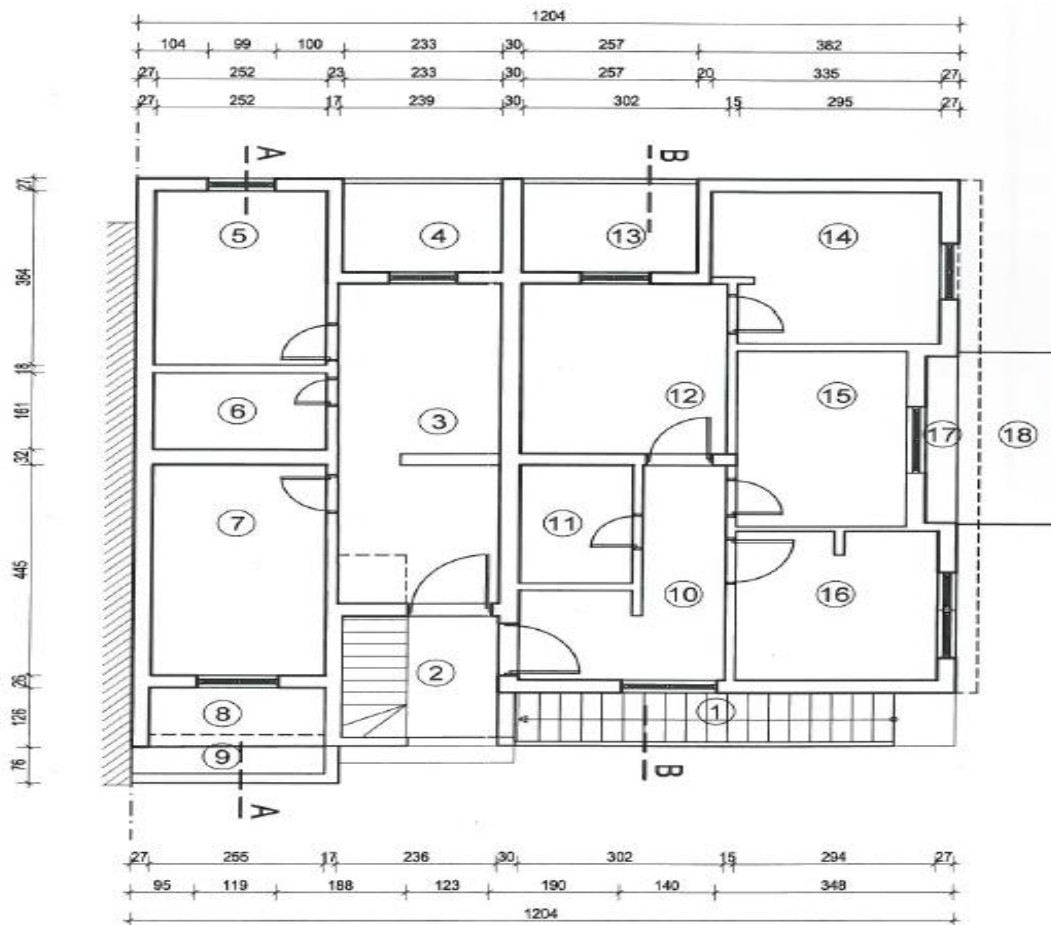


PRIZEMLJE

1. SPREMIŠTE
P= 90,63 m²
2. DNEVNA SOBA / KUHINJA
P= 13,17 m²
3. SPAVAĆA SOBA
P= 9,35 m²
4. KUPAONICA
P= 4,62 m²

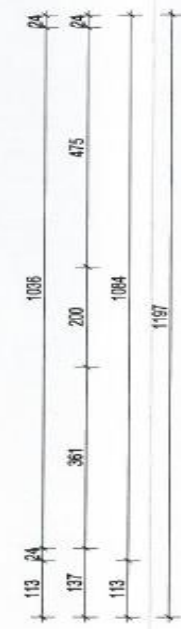
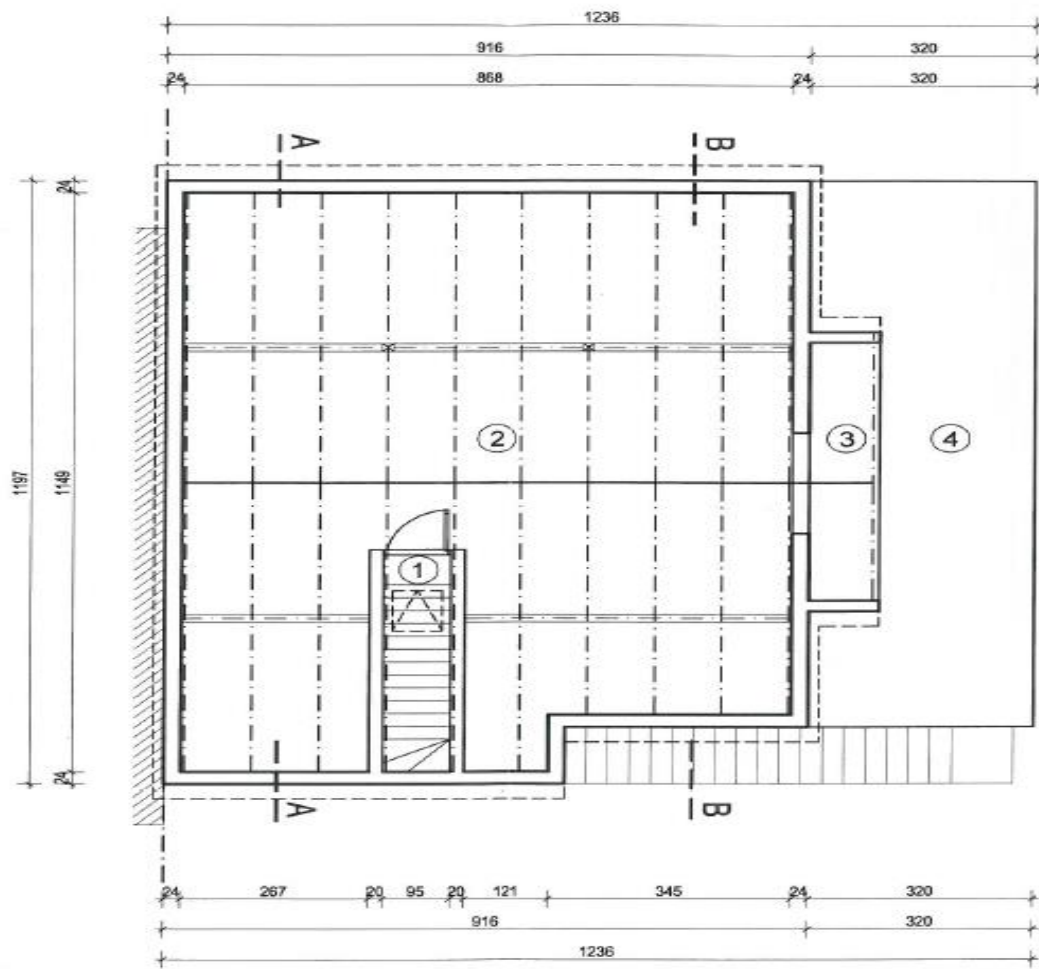
UKUPNO: 117,77 m²



1. KAT

1. STEPENIŠTE
P= 5.72 m² x 0,75= 4,29m²
2. VERANDA
P= 5.84 m²
3. DNEVNA SOBA / KUHINJA
P= 15.65 m²
4. LOBA
P= 4.38 m² x 0,75= 3,29m²
5. SPAVAĆA SOBA
P= 9.17 m²
6. KUPAONICA
P= 4.08 m²
7. SPAVAĆA SOBA
P= 11.29 m²
8. LOBA
P= 3.20 m² x 0,75= 2,39m²
9. BALKON
P= 1.61 m² x 0,50= 0,81m²
10. P= 8.85 m²
11. P= 4.11 m²
12. P= 10.76 m²
13. LOBA
P= 4.82 m² x 0,75= 3,62m²
14. P=10.06 m²
15. P= 9.20 m²
16. P= 9.21 m²
17. LOBA
P= 1.64 m² x 0,75= 1,23m²
18. BALKON
P= 5.60 m² x 0,25= 1,40m²

UKUPNO: 115,27 m²



POTKROVLJE

- 1. STEPENIŠTE
P= 4.10 m²
 - 2. P= 89.87 m²
 - 3. LOĐA
P= 5.14 m² x 0,75= 3,86m²
 - 4. TERASA
P= 29.13 m² x 0,25= 7,28m²
-
- UKUPNO: 105,11 m²

JUŽNA FASADA



ZAPADNA FASADA



ISTOČNA FASADA

